

## ALOKA's new Flagship at Work at ECR 2011

ECR 2011 (23rd European Congress of Radiology) was held from March 3rd to 7th in Austria Center Vienna, where a record-breaking number of 20,120 visitors from a total of 97 countries.



### prosound F75

ECR 2011 was the opportunity for Aloka to introduce the ProSound f75 to the Radiology Community for the first time. The new flagship, presented in a dedicated suite, shows new breakthrough in the Ultrasound Imaging field. "Speed of Sound" allows to adapt, in real time, the velocity reference of the system to the patient morphology for greater image details and accuracy.

eFLOW+ is the next generation of Color Flow Mapping from the Color Doppler Inventor. eFLOW+ provides the highest sensitivity and resolution from the microcirculation, for an increased level of diagnostic.

The ProSound f75 assures a high level of versatility, reduces patient dependency and improves productivity in routine examination.

### prosound α7

#### Powerful, Friendly and Compact High-End System

A complete "Women Healthcare Package" includes new Enhanced 3D functions, with new STIC generation and Realistic Morphing Rendering.

For a rapid and accurate diagnosis during the first trimester, the new AutoNT function allows a precise detection of Nuchal Translucency.

Breast Imaging functions offer a new 3D compact Linear probe with high volume rate and resolution. This new probe is compatible with the full ProSound Line.

The package integrates a new version of Elastography with quantification tools for complete assessments of tissue stiffness.



### prosound F75



The F75 F.I.T. concept has enabled ALOKA to develop a solution to that will be the perfect F.I.T. to its customer's requirements.

With the potential of being one of the most advanced ultrasound systems in the market today the F75 is further strengthened by the innovative Natural Ergonomics of the system which has ensured that this system has the greatest degree of movement than any other system available today. Therefore affording its users a system which is also the perfect F.I.T. to them, reducing repetitive strain.



## ProSound Series

– Powerful, Friendly, Compact

Aloka's full range of ProSound Color Doppler Ultrasound Systems were showcased at ECR 2011



### prosound α6

**Unprecedented, Multi-Purpose Performance**

The Alpha 6 is one of the newest additions to the successful ProSound family of systems and offers an unprecedented level of technology and performance for its class, including 3D functions. Excellent mobility and performance means that this system can deliver superior imaging throughout the hospital environment. The Alpha 6 was also awarded the iF product design award 2010.



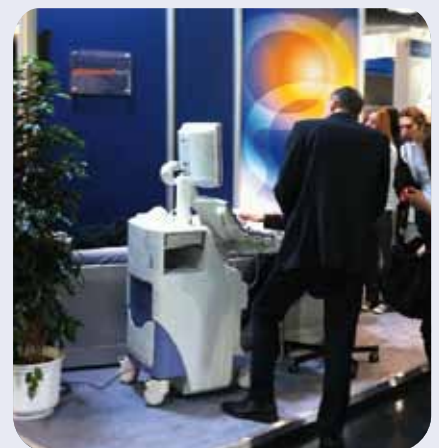
### ECR 2011

A record-breaking number of 20,120 visitors from a total of 97 countries were participating at ECR this year.

### prosound α10

**Ultimate Compounding Technologies and Comprehensive Examinations**

The ProSound Alpha 10 features CPWG (Compound Pulse Wave Generator) which allows ultrasound pulse waveforms to be organized and transmitted to fit a variety of conditions. The ProSound Alpha 10 provides outstanding performance and usability.



### prosound c3

**Powerful, Portable Imaging Solution**

ProSound C3 is premium compact ultrasound system, which is a PC based powerful machine.